



FITPADDY

PRODUCT CATALOGUE

INDEX

POWER

The Power line includes strength-building equipment: dumbbells, kettlebells, and ankle and wrist weights, ideal for intensifying resistance training and toning muscles

HOLISTIC

The Holistic line includes essential accessories for Yoga, Pilates, and stretching: mats, blocks, straps, and other tools for a comfortable practice and improved flexibility

UTILITY

The Utility line offers accessories designed to enhance the practicality and comfort of workouts and sports activities, both indoors and outdoors

TRAINING

The Training line includes accessories and equipment for overall fitness: resistance bands, push-up and abdominal tools, muscle recovery and stability equipment, and additional accessories

CARE

The Care line includes supports for joints and muscles: elbow, ankle, knee, calf, palm, and wrist braces, ideal for injury prevention and enhanced recovery

AUDIO

The Audio line offers innovative fitness-oriented products designed to accompany you through every workout with style, performance, and safety



FITPADDY

POWER *line*

PREMIUM DUMBBELLS

0.5 kg – 1.5 kg

- Weights from 0.5 kg to 5 kg (0.5 kg, 1 kg, 2 kg: 2 pcs per pack – 5 kg: 1 pcs per pack).
- Neoprene coating for a stable and comfortable grip.
- Hexagonal shape prevents rolling.
- Suitable for exercises targeting various muscle groups.
- Effective for toning and strengthening the body, optimizing workout results.

sku:

DB2X05 (0.5 kg)

DB2X1 (1 kg)

DB2X2 (2 kg)

DB2X4 (5 kg)



DUMBBELLS SET



- 6 kg dumbbell set with 6 pieces.
- 2 dumbbells of 0.5 kg, 2 of 1 kg, and 2 of 1.5 kg, allowing for a gradual increase in workload.
- Soft-grip yellow neoprene coating for a comfortable and secure grip.
- Carrying case included for easy and safe storage and transport of the dumbbells.
- Suitable for a wide range of exercises targeting various muscle groups.

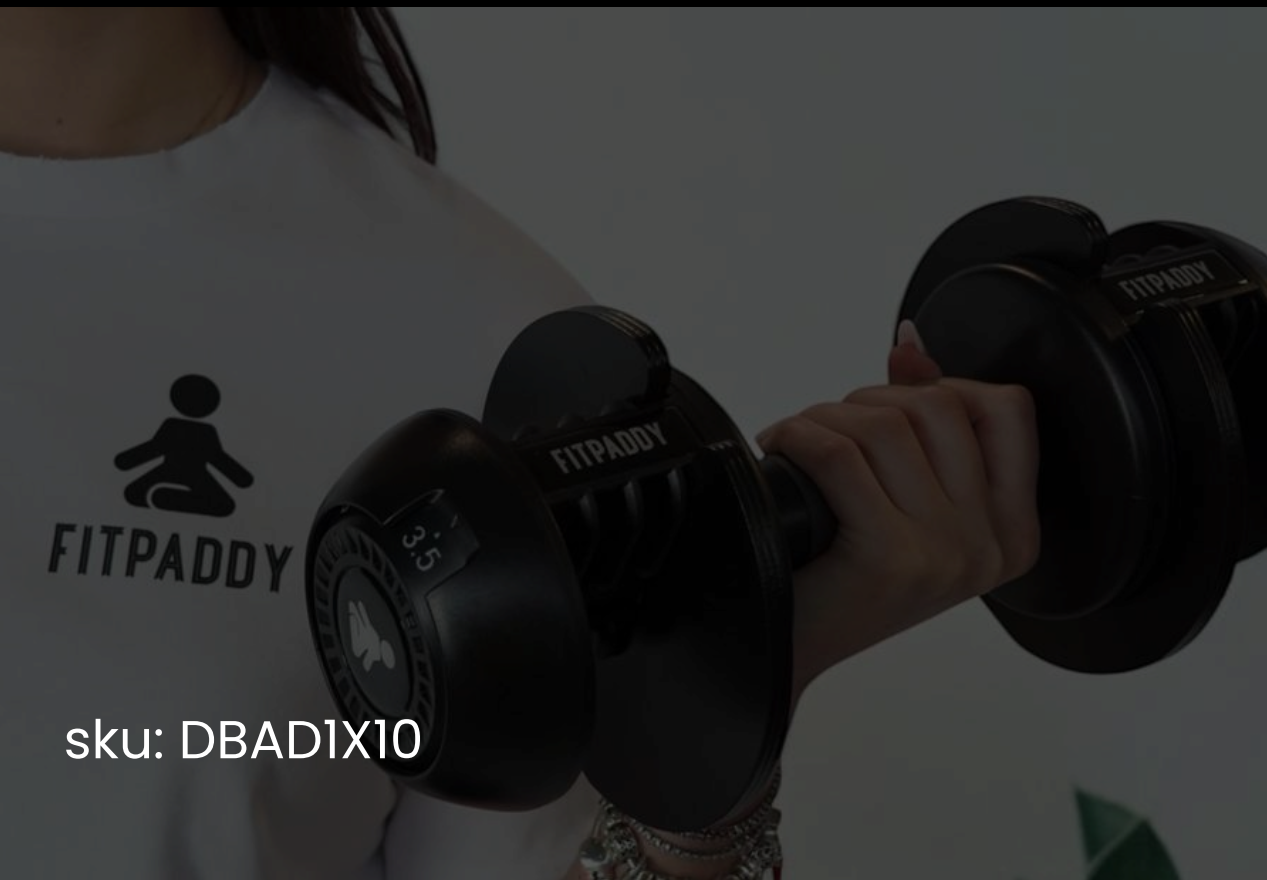


sku: DBKIT6YL

ADJUSTABLE DUMBBELLS

1.5 kg – 10 kg

- Adjustable dumbbell with variable weight from 1.5 kg to 10 kg.
- The dumbbell can be set to 5 different weight levels.
- Ideal for improving strength, endurance, and muscle definition.
- Made with a metal structure and a polypropylene coating.



sku: DBAD1X10



COMFORT KETTLEBELL

4 – 8 kg

- Dumbbells with wide ergonomic grip.
- Scratch-resistant coating.
- Flat and wide base for optimal stability.
- Perfect for exercises like swings, squats, and lunges, promoting strength, endurance, and overall fitness.



sku:

KBIX4 (4 kg)

KBIX8 (8 kg)

8
KG

ANKLE-WRIST WEIGHT

1 kg - 2 kg

- Adjustable Velcro closure.
- Easy to wear in just a few seconds.
- Available in 1 kg and 2 kg versions.
- Made with high-quality fabric and anti-chafing stitching.
- Help effectively strengthen muscles and increase exercise intensity.



sku:

AKWW2X1BK (1 kg)

AKWW2X2BK (2 kg)

 **FITPADDDY**





FITPADDY

TRAINING *line*

RESISTANCE TRAINING BANDS

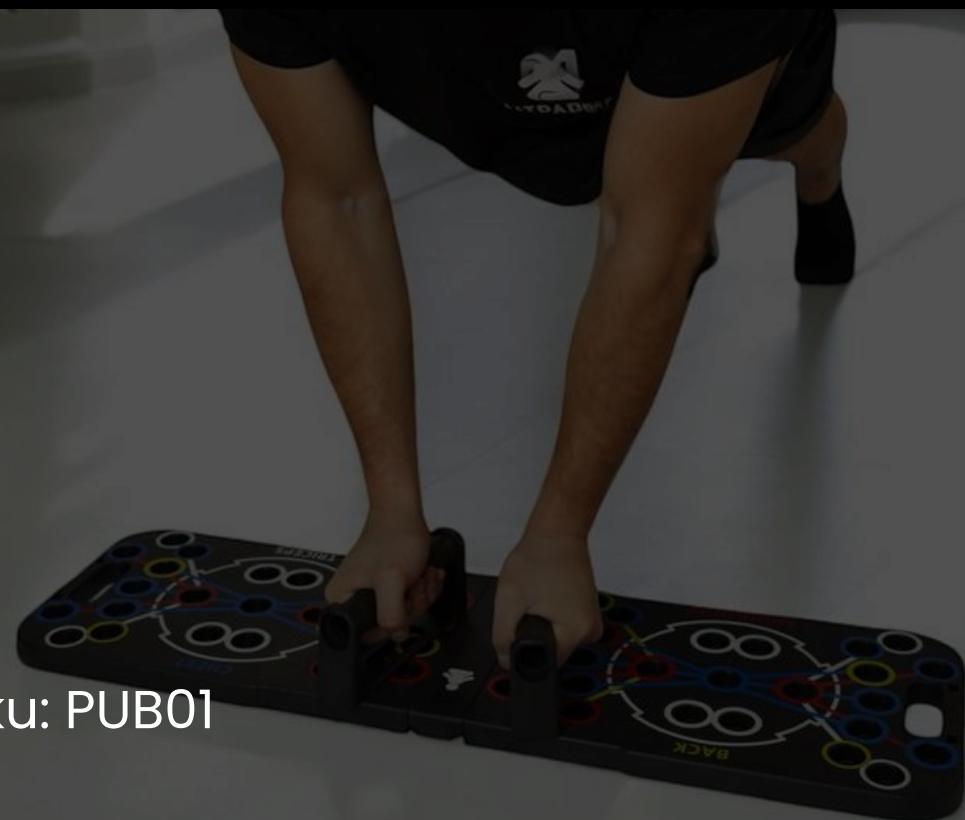
- Adjustable resistance up to 46 kg.
- 5 elastic resistance bands with variable resistance (5 / 7 / 9 / 11 / 14 kg) for personalized workouts.
- Bands can be used individually or in combination.
- Ergonomic accessories.
- Handles and bar with soft coating for a comfortable and secure grip.
- Complete kit with ankle/wrist straps.
- Carrying bag included.
- Allows full-body exercises, improving toning, strength, and endurance.

sku: TRSET01



PUSH-UP BOARD

- Wide range of handle positions and configurations to target chest, shoulders, triceps, and back.
- Non-slip rubber pads and solid handle locks ensure safety and stability during workouts.
- Compact and lightweight design, easily portable for training anywhere, at home, in the gym, or on the go.
- Suitable for users of various heights and body types.



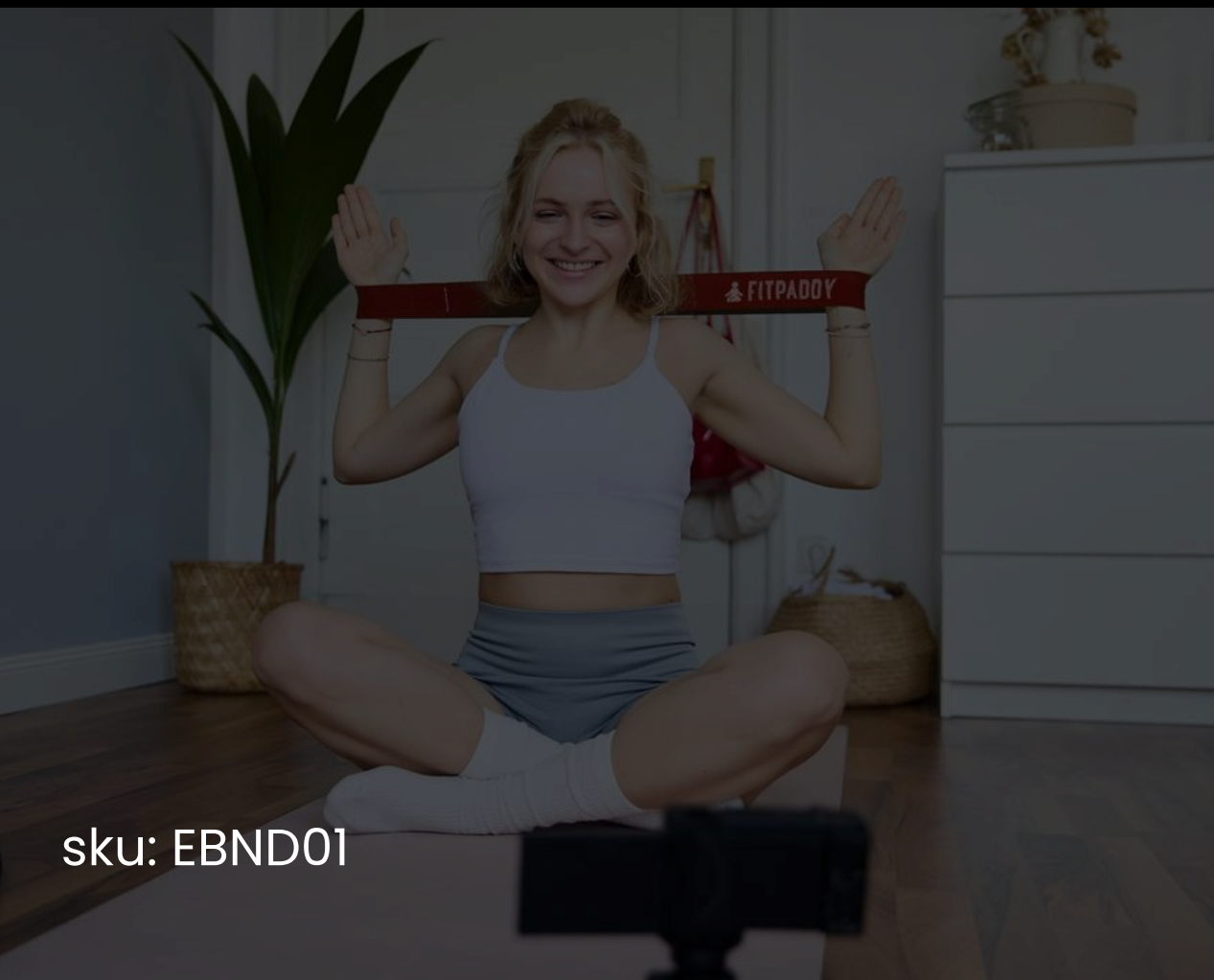
sku: PUB01



ELASTIC BANDS

5 pcs

- Complete kit with 5 resistance bands, each offering a different resistance level.
- Customizable workout based on individual abilities and goals.
- Improve strength, balance, flexibility, and muscle endurance.



sku: EBND01

JELLY HAND GRIP

- Made of high-quality silicone for long-lasting use.
- 3 resistance levels: 10/15 kg, 20/25 kg, 30/35 kg.
- Ergonomic design for a comfortable and secure grip.
- Ideal for strengthening hand, wrist, and forearm strength.
- Textured surface to improve grip and stability.
- Can also be used for rehabilitation or recovery workouts.

sku:

JHG1015 YELLOW

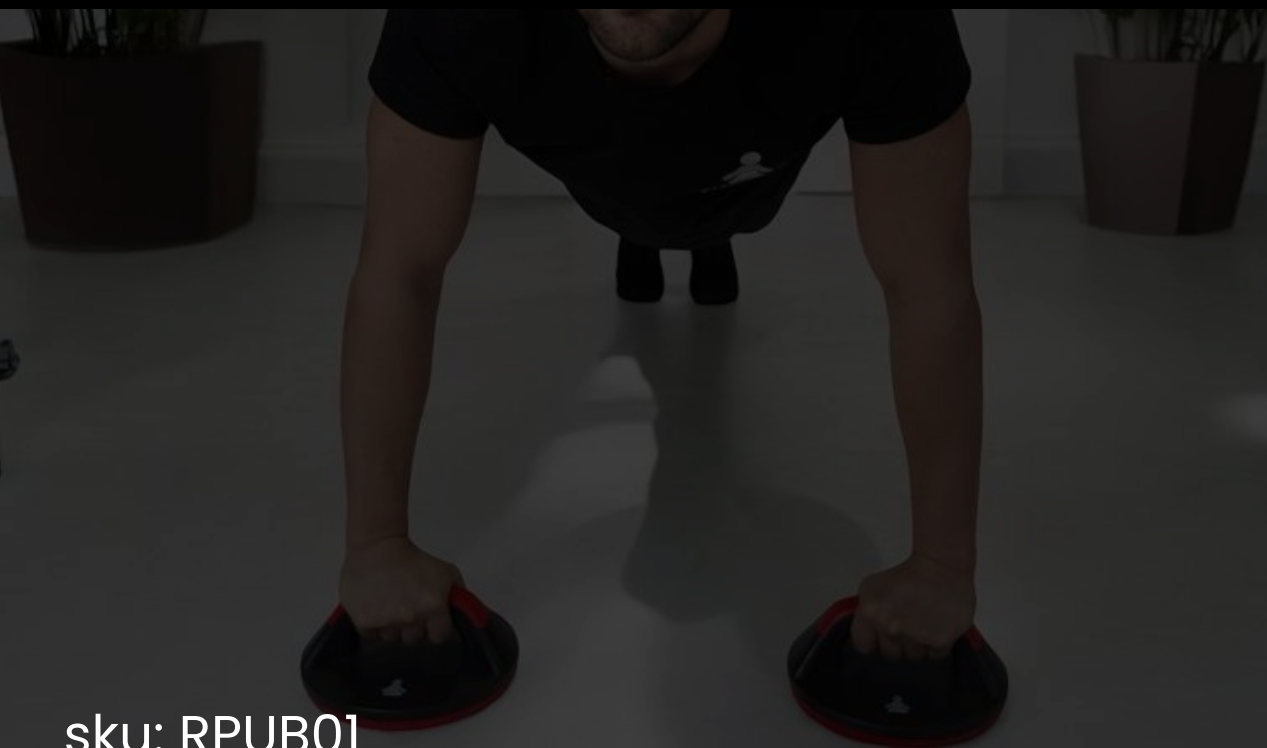
JHG2025 ORANGE

JHG3035 BLACK



ROTATING PUSH-UP BARS

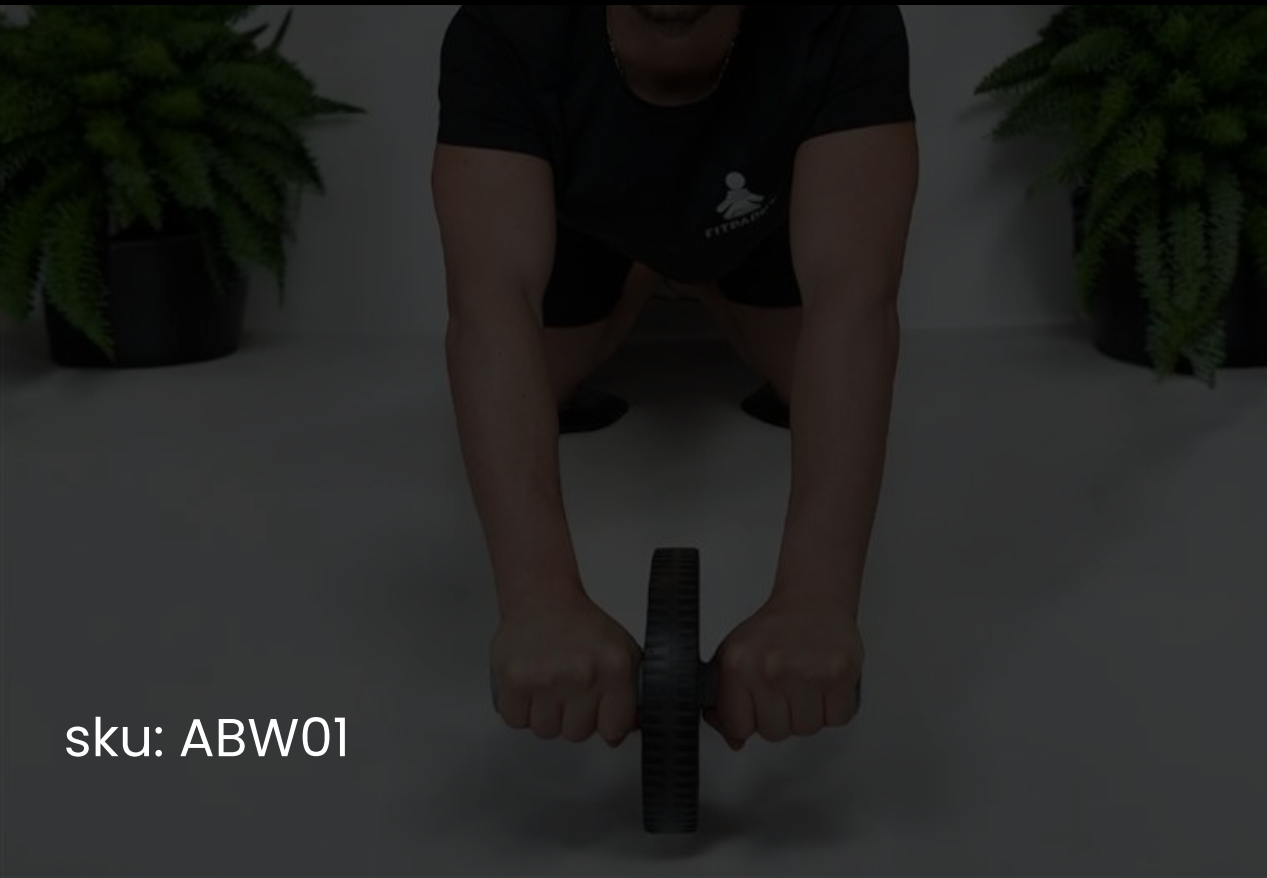
- Comfortable and stable with a comfortable grip and non-slip pads.
- Wrist protection thanks to the rotation that prevents hyperextension during workouts.
- Exercise diversification thanks to adjustable angles for targeted training on chest, triceps, and shoulders.



sku: RPUB01

ABDOMINAL EXERCISE WHEEL

- Ergonomic non-slip handles for a secure and comfortable grip.
- Scratch-resistant surface that protects the floor during use, compatible with different surfaces.
- Useful for abdominal strengthening, core stability, and improving flexibility and mobility



sku: ABW01



ADJUSTABLE HAND GRIP

- Adjustable resistance from 10 to 100 kg.
- Display with integrated counter to monitor the number of repetitions performed.
- Versatility in various sports disciplines.
- Universal design.
- Benefits for rehabilitation, helpful for recovering strength and functionality of the hands and forearms after injuries or surgeries.



sku: HGAD01



GYMBALL 65 CM

- Improves balance and stability by activating underused muscles.
- Strengthens the abs, back, glutes, and legs with targeted exercises.
- Increases flexibility and mobility, preventing injuries and improving posture.
- Durable PVC material, safe and long-lasting.
- Easy to use, with an included pump for quick inflation.



sku: GBALL65



MASSAGE ROLLER

- Myofascial release: relieves tension, improves circulation, and accelerates recovery.
- Ergonomic design, textured surface for deep and targeted massage.
- Quality EVA materials, durable and lightweight, maintains shape over time.
- Suitable for back, legs, arms, and feet, ideal for stretching and rehabilitation.
- Improves flexibility, mobility, and prevents injuries.



sku: MROLLER01



LED RUNNING ARMBAND

- Visibility and safety during evening or nighttime runs. Integrated high-brightness LED lights.
- Adjustable with snap clip, fits arms of all sizes for a comfortable and secure fit.
- Ultra-lightweight (20 grams).
- Waterproof, made with durable materials for use in any weather conditions.
- Versatile, suitable for running, cycling, walking, hiking, and other outdoor activities that require visibility for safety.

sku: ARMLED01YL





FITPADDY

HOLISTIC *line*

BABY MAT

- Yoga mat specifically designed for children, measuring 120x61 cm and 6 mm thick for comfort and safety.
- Made from high-quality TPE, 100% recyclable, non-toxic, hypoallergenic, and PVC-free, ensuring a safe environment.
- Non-slip surface for better grip and stability.
- Lightweight (600 grams) and easy to carry with the included cord.
- Perfect for developing motor skills, balance, and coordination, promoting a healthy and active lifestyle for children.
- Available in pink and blue colors.

sku:

BABYMAT01BL (BLUE)

BABYMAT01PK (PINK)



YOGA MAT

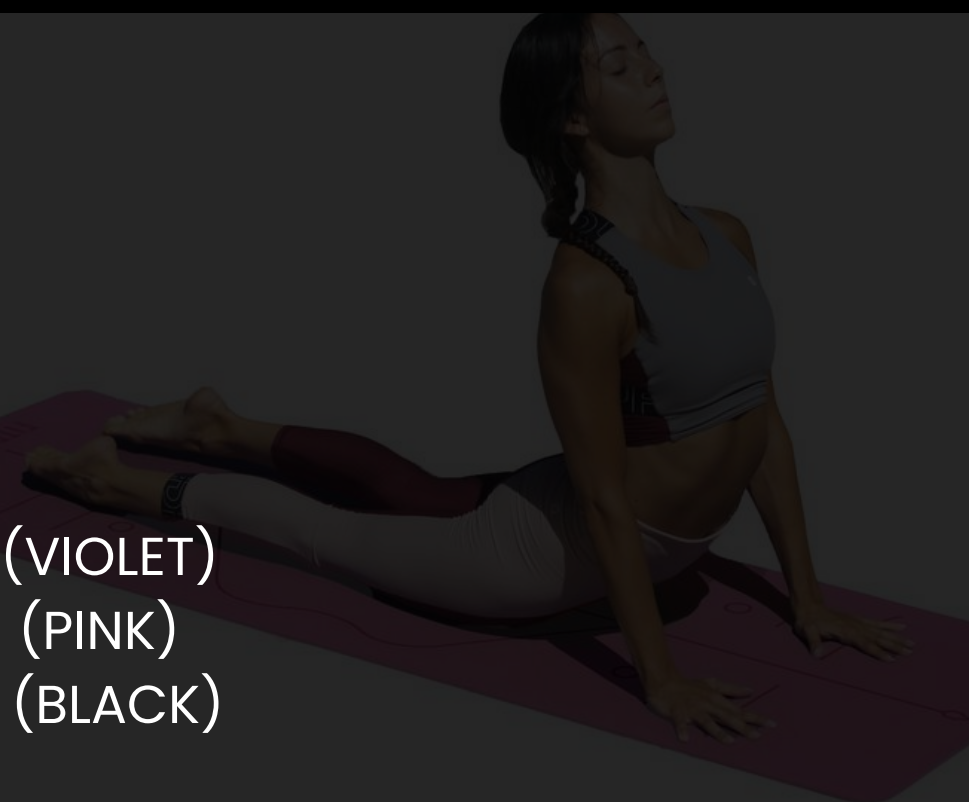
- Eco-friendly material: 100% recyclable TPE, durable and comfortable.
- Posture guidelines: helps with the correct alignment of hands and feet.
- Practical and lightweight: weighs less than 1 kg, easy to carry with the included cord.
- Easy to clean: simply wipe with a damp cloth and mild detergent.
- Optimal dimensions: 183 x 61 cm, 6 mm thickness for comfort and stability.

sku:

MAT01VL (VIOLET)

MAT01PK (PINK)

MAT01BL (BLACK)



YOGA BLOCKS

- Yoga blocks (2 pieces per pack) ideal for yoga, pilates, and fitness.
- Lightweight, durable, and non-slip.
- Improve posture, flexibility, and alignment during exercises.
- Perfect for yogis of all levels, from beginners to experts.
- Available in pink and purple.



sku:
BLOCK01VL (VIOLET)
BLOCK01PK (PINK)



YOGA KNEE PADS

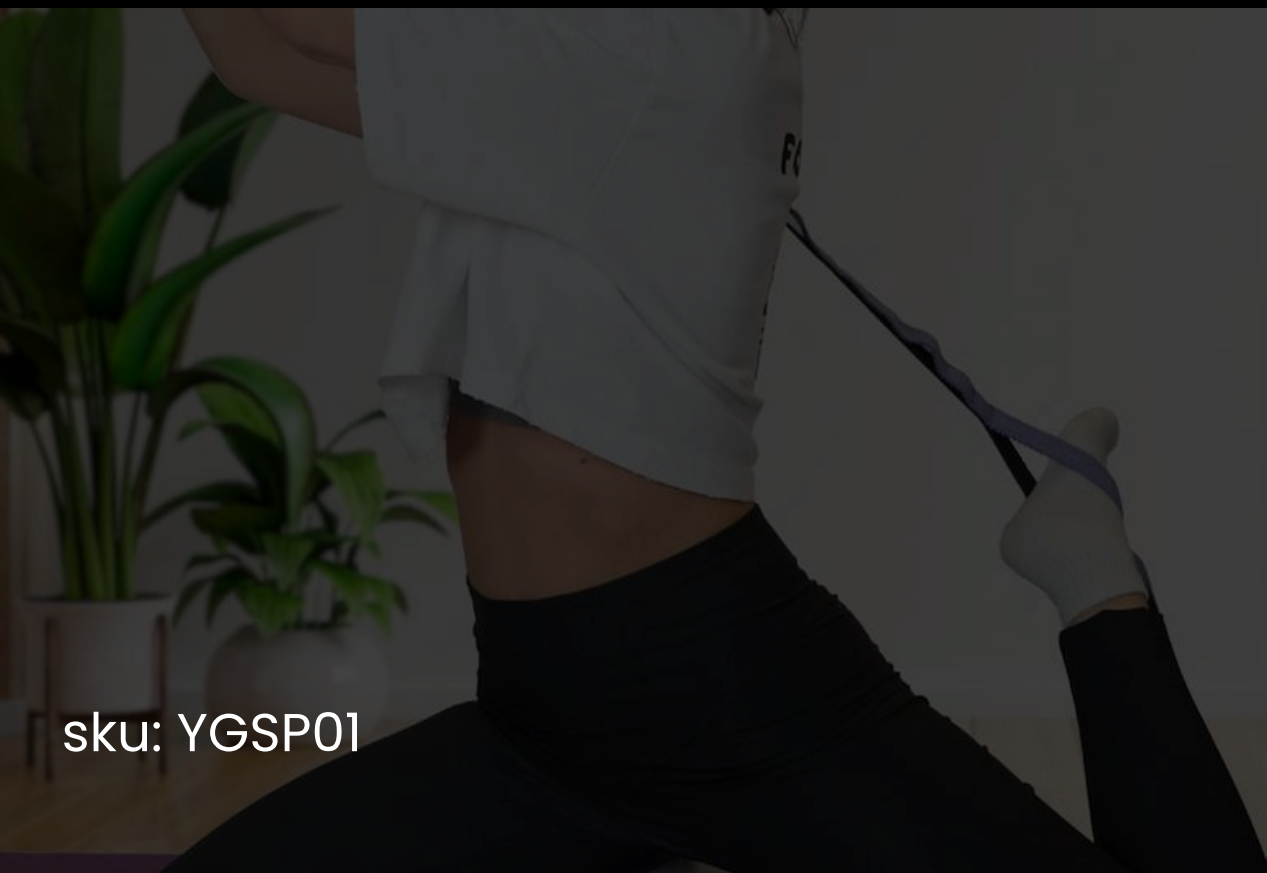
- Knee and elbow yoga pads (2 pieces per pack) made of high-density material.
- Protect joints and pressure points during practice, enhancing comfort during exercises.
- Concave surface that fits knees, elbows, hands, and head, promoting stability and balance.
- Cushion the body, reducing discomfort and preventing injuries during poses and movements.
- Ideal for yoga, pilates, stretching, meditation, and floor workouts.



sku: YGPAD01BK

STRETCHING LOOP BAND

- Stretch band with 10 loops, 180 cm long and 2.5 cm wide, ideal for stretching exercises.
- Versatile, allowing a wide range of exercises with varying resistance levels, suitable for all skill levels.
- Ergonomic design with rings and fabric ensuring a secure and comfortable grip during use.



sku: YGSP01





FITPADDY

UTILITY *line*

MAGARM

- Ideal for outdoor sports.
- Practical and comfortable.
- Quick access to your smartphone.
- Secure attachment with a powerful N52 magnet and a 3M adhesive ring for non-MagSafe devices.
- 360° rotating base for customizable angles.
- Adjustable strap for arm sizes from 22 to 47 cm.
- Non-slip materials for added stability.

sku: MAGARM



MAGSAFE

- Versatile use: Ideal for treadmills, spin bikes, and metal surfaces.
- Secure attachment: N52 magnet for MagSafe devices + 3M adhesive ring for other devices.
- Dual magnet: A second magnet on the back for attachment to metal surfaces.
- Dimensions and weight: 24 cm in length, 60 g in weight.
- Adjustable strap: Fits arm sizes from 12 to 20 cm.
- Lightweight and durable: Perfect for any activity.



sku: MAGBELT



FITBELT

- Premium materials: water-resistant lycra and breathable mesh for maximum comfort.
- Adjustable elastic strap (64-120 cm) for stability and secure fit.
- Optimal capacity: 3 compartments – main one for smartphone, two side pockets for small items.
- Reflective details for nighttime visibility, durable zipper.
- Ideal for running, gym, cycling, and hiking.



sku: FITBELTBK



FITPADDY

AUDIO *line*

FITBEAT PRO

- Open-Ear design
- Dual audio modes: Outdoor (clarity) and Indoor (detailed audio).
- SBC & AAC codec: superior sound quality, perfect for all devices.
- Stable connection: up to 10 meters, with dual device support.
- Battery life: 5 hours per charge, 35 hours with case (USB-C, fast charging).
- Sweat and splash resistant, ideal for sports.
- Touch controls and dual microphones with noise reduction.

sku: OEE01BK



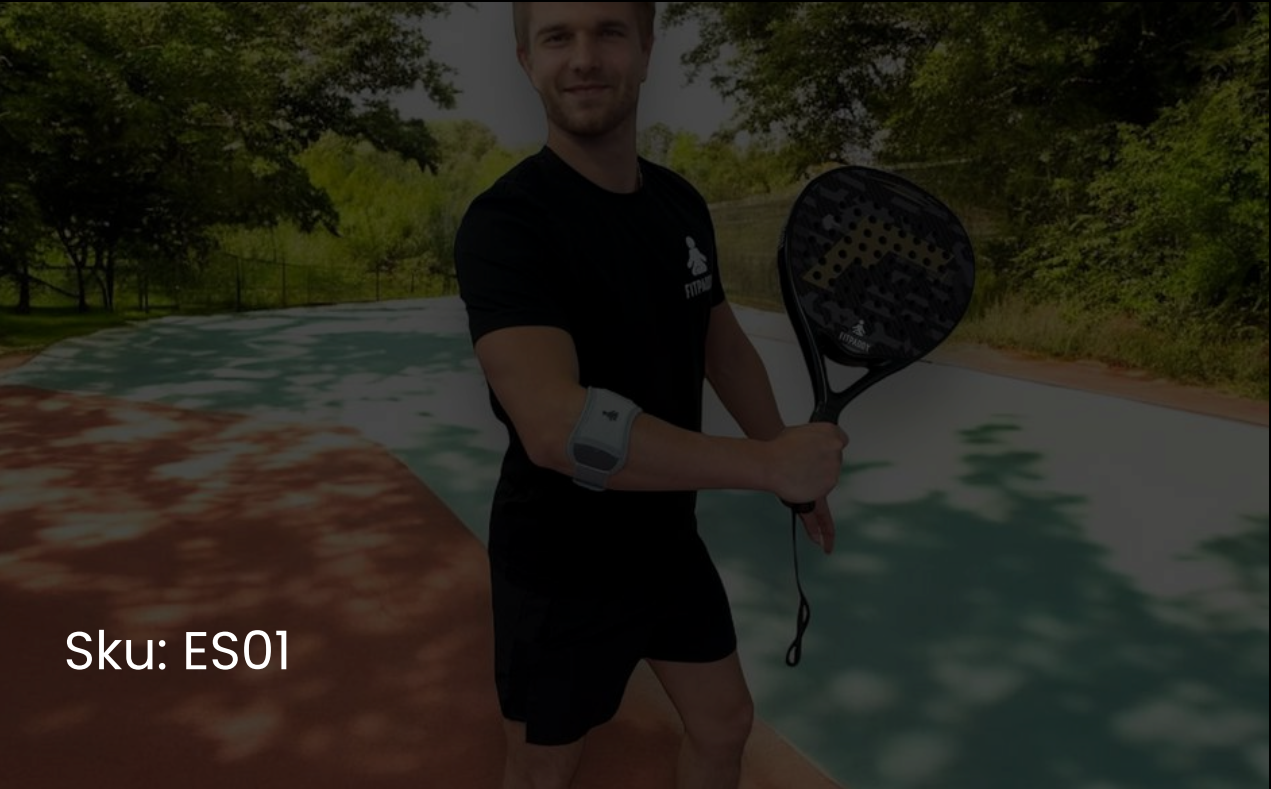


FITPADDY

CARE *line*

ELBOW SUPPORT

- Adjustable elbow support that provides stability and targeted compression to prevent injuries and relieve pain.
- Internal silicone insert for a perfect fit and optimal support.
- Ideal for recovery from epicondylitis and tendinopathy.
- Lightweight, adjustable, and customizable for maximum comfort. Suitable for daily activities and sports.



Sku: ES01



ANKLE SUPPORT



- Ankle support (sizes S / M / L / XL) that provides stability and support to improve safety during physical activity.
- Made with breathable, lightweight material, it comfortably fits the ankle, preventing injuries and promoting recovery.
- The hook-and-loop fastener allows for easy adjustment of size and compression level, offering a customized fit.
- Ideal for protecting the ankle during intense movements and speeding up recovery after an injury.



sku:

AS01SM (SIZE S/M)

AS01LXL (SIZE L/XL)

KNEE SUPPORT

- Adjustable knee support that provides stability and targeted compression to prevent injuries and relieve pain.
- Silicone insert ensures a perfect fit and optimal support.
- Ideal for post-surgery recovery, osteoarthritis, and patellar tendinitis.
- Lightweight, adjustable, and customizable for maximum comfort.
- Perfect for use during physical activity and injury recovery.



sku: KS01



CALF SUPPORT

- Calf support (size S / M / L / XL) that provides compression and support during physical activity.
- One piece per package.
- Breathable materials help improve blood circulation, prevent fatigue, and reduce the risk of injuries.
- Ideal for optimizing performance and speeding up muscle recovery.
- Comfortable to wear for extended periods, offering targeted support to the calves during workouts.
- Perfect for accelerating healing and reducing muscle soreness after physical activity.

sku:

CS01SM (SIZE S/M)

CS01LXL (SIZE L/XL)



PALM SUPPORT

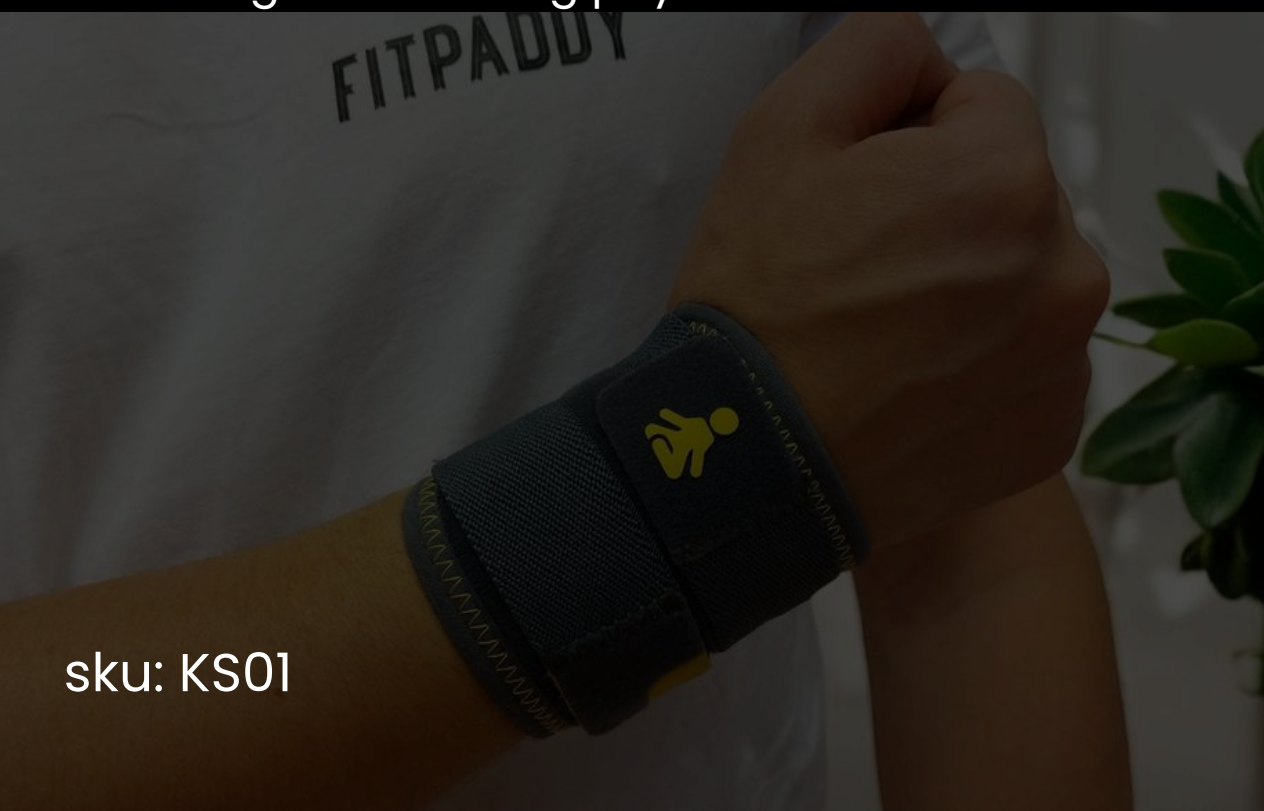
- Adjustable palm support that provides support and comfort during physical activity.
- Thanks to the hook-and-loop fastener, it is easy to adjust the compression level to suit personal needs.
- Helps prevent injuries, providing stable support for the wrist without restricting mobility.
- Ideal for activities such as weightlifting, yoga, and crossfit, offering a customized fit for every type of workout.

sku: PS01



WRIST SUPPORT

- Adjustable with two hook-and-loop straps for a personalized and secure fit.
- Enhances stability during physical activities, reducing the risk of injuries.
- Versatile, suitable for push-ups, weightlifting, tennis, padel, and other activities that strain the wrists.
- Offers comfort even during extended use, without compromising functionality.
- Prevents injuries by stabilizing the wrist and reducing strain during physical activities.



sku: KS01